

**LOUDLY
INVISIBLE:**

**INTIMATE
PARTNER
VIOLENCE IN THE
WORLD OF
BISEXUAL WOMEN**

JAYLEN HEADY (SHE/HER)

MEDIA STUDIES MAJOR

WOMEN, GENDER, AND SEXUALITY STUDIES

MINOR

DID YOU KNOW?

61% of bisexual women will be stalked, raped, or abused in some capacity in their lifetime

that number is 17% higher than that of lesbian women and 26% higher than that of heterosexual women

75% of bisexual women will report victimization or fear for their safety in their lifetime

90% of IPV bisexual victims report male perpetrators

BUT

it's important to know that women can be perpetrators too, ALL experiences are real and valid

HERE'S THE DEAL



SINCE BISEXUAL WOMEN ARE MORE SUSCEPTIBLE TO FACING SIGNIFICANT AND OFTEN INTERSECTIONAL VICTIMIZATION, THEY ADDITIONALLY FACE A GREATER RISK OF BECOMING VICTIMS OF IPV.

THUS, THE INCLUSION AND VALIDATION OF BISEXUALITY ARE IMPERATIVE IN ORDER TO EXPAND RESEARCH, PREVENTION, AND VISIBILITY FOR BISEXUAL VICTIMS OF INTIMATE PARTNER ABUSE.

INTERSECTIONALITY

STOP & Evaluate!

polyvictimization: victims of
IPV that identify under
multiple minority classes will
face greater discrimination and
violence contextualized and
racialized by the way such
inequalities interact




SO

a black bisexual woman would face
different and greater forms of
violence & victimization compared to
a white bisexual woman, for example

while general resources
and information can be
helpful, transgender
women should look
further to trans-
specific resources

for more information visit:
www.allurvivorsproject.org
www.forge-forward.org
www.rubysplace.org

WHY DO BISEXUAL WOMEN HAVE HIGHER RATES OF IPV & VICTIMIZATION COMPARED TO HETEROSEXUAL & LESBIAN WOMEN?



1.) BISEXUAL WOMEN ARE OVERSEXUALIZED BY THE PATRIARCHY (INFORMED BY THE MALE GAZE), MASS MEDIA, AND GENDERED STEREOTYPES

2.) MEMBERS OF THE LGBTQIA+ COMMUNITY ARE MORE LIKELY TO BATTLE WITH SUBSTANCE ABUSE

3.) BIPHOBIA LEAVES BISEXUAL WOMEN MORE VULNERABLE TO VIOLENCE AND IDENTITY ABUSE

HYPERSEXUALIZATION

CAUSE

dehumanization and objectification of women having sex with other women is informed by patriarchy

women's sexuality (not involving men) disrupts the patriarchal binary and ignores male-centric sexual gratification

bisexual women are viewed as perpetually sexually available

EFFECT

men may feel threatened by a loss of control (of patriarchal norms, sexual activity, etc.)

fueled by jealousy, men will deem bisexual women untrustworthy

2022 MOST POPULAR PORNHUB SEARCHES

threesome

step mom

race fetish

lesbian

trans



MEDIA

"Both Ways" - Liam Payne

[Chorus]

My girl, she like it both ways
She like the way it all taste
Couple more, we'll call it foreplay
No, no, I don't discriminate
Bring it back to my place
Yeah, she like it both ways (Both ways)
Both ways, both ways (Both ways)

[Refrain]

Lovin' the way that she's turning you on
Switching the lanes like a Bugatti Sport
Nothing but luck that she got me involved, yeah
Flipping that body, go head, I go tails
Sharing that body like it's our last meal
One and a two and a three, that's for real

Nip/Tuck 1x06 & 1x07



MEDIA

One Tree Hill's Anna Taggaro



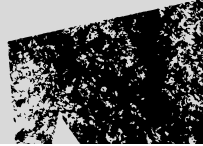
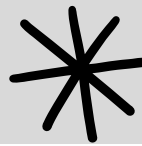
"Make Me Feel" - Janelle Monáé

[Verse 1]

Baby, don't make me spell it out for you
All of the feelings that I've got for you
Can't be explained, but I can try for you
Yeah, baby, don't make me spell it out for you
You keep on askin' me the same questions (Why?)
And second-guessin' all my intentions
Should know by the way I use my compression
That you've got the answers to my confessions

[Pre-Chorus]

It's like I'm powerful with a little bit of tender
An emotional sexual bender
Mess me up, yeah, but no one does it better
There's nothin' better



SUBSTANCE ABUSE

CAUSE

to cope with
homophobia,
discrimination, or
the very abuse that
they may suffer

inhibited perception
of environment,
altered moods, and
altered actions

EFFECT

greater exposure to
polyvictimization

prone to victim-
blaming

KEY IDEA

victim
facilitation: to
blame the victim
for abuse because
they made the
crime easy to
commit

BIPHOBIA



CAUSE

hegemonic masculine
idea perpetuated by
society

under binary ideals,
society expects you
to be one or the
other (lesbian vs.
straight)

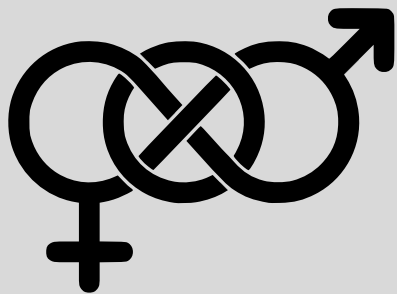
the male gaze of
female sexuality
sustains the idea
that bisexual women
may be merely looking
for attention,
specifically from men
since they generally
sexualize lesbianism

EFFECT

invalidation and
erasure

internalized biphobia
and subsequent self-
blame & negative
self-identity

inability to find
opportunities to
escape abuse if
biphobia is
internalized to
victim-blaming



AM I EXPERIENCING IDENTITY ABUSE?

DEFINE IT

tactics that leverage systemic oppression to harm an individual

DOES THE ABUSER...

DENIGRATING

use homophobic slurs?
uplift heteronormativity as
a means to express your
inability to be loved?

MANIPULATING

control your gender
expression?
compel you to act in
gendered ways?

DENYING

avoid correct
pronouns?
invalidate your
sexuality?

isolation abuse: icing
a victim out from any
form of support or
community or
weaponizing the
victim's sexuality by
threatening to out
them



A FEW LGBTQIA+ IPV RESOURCES

HOTLINES & INFORMATION

www.tnlr.org

www.avap-stl.org

COUNSELING

SHELTER

www.helpwomen.org

www.projecthome.org

www.twsh.org

www.domesticshelters.org



FOR MORE RESOURCES

VISIT:

www.womenagainstabuse.org


<https://www.mass.gov/doc/resources-for-victims-with-unique-needs/download>



MOVING FORWARD



COMBAT BI-ERASURE




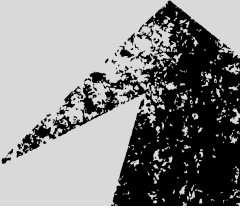
- 1.) uplift and promote bisexual activists, celebrities, authors, and those in your community
- 2.) remember that one's relationship does not disregard someone's bisexuality
- 3.) debunk the myths that preserve biphobia

EDUCATE



ADVOCATE

- 1.) institutionally push for better sex education that addresses harmful patriarchal ideologies, sexuality, and sheds light on IPV signs, resources, and prevention

- 1.) volunteer at your local women's shelters
 - 2.) be on the lookout for ways you can impact your community
 - 3.) share these resources
 - 4.) USE YOUR VOICE!
your platform is your power
- 
- 

"RUN TO THE RESCUE WITH LOVE, AND PEACE WILL FOLLOW" - RIVER

PHOENIX

SOURCES

Garcia, Venessa, and Patrick McManimon. Gendered Justice Intimate Partner Violence and the Criminal Justice System. Rowman & Littlefield Publishers, 2012.

Gattuso, Reina. "Myths about Bisexual People Aren't Just Wrong - They're Dangerous." Teen Vogue, 6 Dec. 2019, <https://www.teenvogue.com/story/why-bisexual-women-are-at-a-higher-risk-for-violence>.

Messinger, Adam M., and Xavier L. Guadalupe-Diaz. Transgender Intimate Partner Violence: A Comprehensive Introduction. New York University Press, 2020.

NISVS. "NISVS: An Overview of 2010 Findings on Victimization by Sexual Orientation." NISVS: An Overview of 2010 Findings on Victimization by Sexual Orientation, 2010, https://www.cdc.gov/violenceprevention/pdf/cdc_nisvs_victimization_final-a.pdf.

Swift, Jayne. "Bisexual Women and Intimate Partner Violence." Gender Policy Report, 11 Nov. 2019, <https://genderpolicyreport.umn.edu/bisexual-women-and-intimate-partner-violence/>.

Woulfe, Julie M., and Lisa A. Goodman. "Identity Abuse as a Tactic of Violence in LGBTQ Communities: Initial Validation of the Identity Abuse Measure." Journal of Interpersonal Violence, vol. 36, no. 5-6, 2018, pp. 2656-2676., <https://doi.org/10.1177/0886260518760018>.

Zane, Zachary. "Why Do Bi Women Face Higher Rates of Sexual Violence?" Bi.org, 2017, <https://bi.org/en/articles/why-do-bi-women-face-higher-rates-of-sexual-violence>.

CREATED 2023

INSTAGRAM: @JAYYYBROOKE

FIND ME ON WWW.UNITEDBYPOP.COM

WWW.DISRUPTEDMAG.COM